



EHR in people's hands across Europe

# ARCHITECTURE, PROTOCOLS AND API's

## MID-TERM PUBLIC WORKSHOP

21 OCTOBER 2020

This project has received funding from the European Union's Horizon 2020 research and innovation programme under grant agreement No 826106



# ARCHITECTURE FOR DECENTRALISED HEALTH DATA SHARING

**Francesco Torelli**

InteropEHRate Technical Coordinator, Engineering, Italy



# INTEROPERABLE GOAL

*To support cross-border exchange of  
personal health data*  
**between citizens and EU organisations**



## HOW

Define, validate and promote an **open specification** to securely store health data on personal mobile apps (**S-EHRs**) and exchange health data between citizens and healthcare providers or researchers of different countries using **InteropEHRate protocols**.



# RESULTS

## 1. InteropEHRate open specification

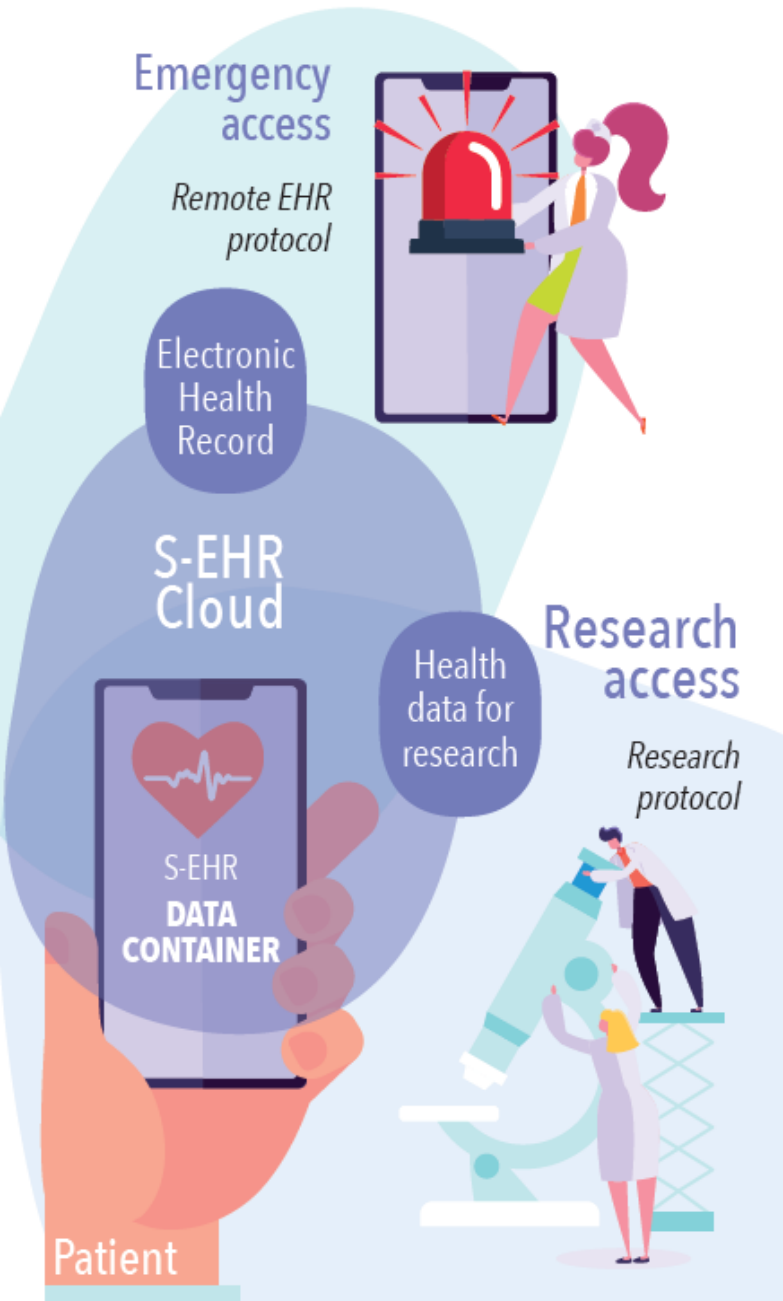
Vendor independent remote APIs and rules to become EU standard.

## 2. InteropEHRate Framework

The reference implementation of the InteropEHRate open specification.



# INTEROPEHRATE OPEN SPECIFICATION



## 1. *D2D protocol* – applied to **Medical visit abroad**

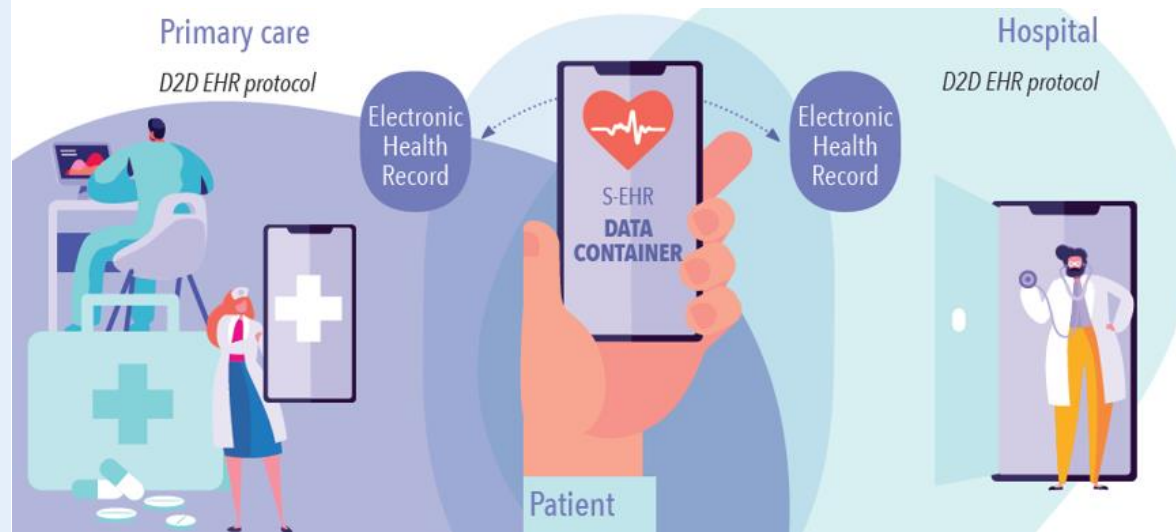
*Exchange of health data with **S-EHRs** without internet connection*

## 2. *R2D protocols* – applied also to **Emergency access**

*Remote access to EHRs and to personal cloud (**S-EHR Cloud**)*

## 3. *RDS protocol* – applied to **Health Research study**

*Sharing of health data from **S-EHRs** with specific research studies*



# INTEROPEHRATE OPEN SPECIFICATION

## 1. FHIR profiles for EHR interoperability

## 2. S-EHR conformance levels

constraints that S-EHRs and S-EHR Clouds must fulfil;

### Leverage

- HL7 FHIR
- CEN IPS
- eIDAS
- Encryption

## 3. Device to Device (D2D) protocol

exchange of health data between Citizen and *Healthcare Organisation*, on Bluetooth;

## 4. Remote to Device (R2D) protocols

R2D Access: download by Citizens of health data from *Healthcare organisations*;

R2D Backup: storage by Citizens of encrypted health data on S-EHR Cloud;

R2D Emergency: access by *Healthcare Organisations* to S-EHR Cloud in emergency;

## 5. Research Data Sharing (RDS) Protocol

exchange by Citizen of health data with *Research Centres*.



# INTEROPEHRATE FRAMEWORK

## PROTOTYPES OF LIBRARIES, SERVICES & APPLICATIONS

1. **S-EHR app**: prototype of app compliant to the S-EHR conformance levels: stores encrypted health data on mobile, exchanges them with Healthcare organisations and Research centres under citizen control.
2. **S-EHR Cloud**: prototype of cloud service complaint to S-EHR conformance levels. Stores encrypted health data if asked by Citizens. The S-EHR Cloud provider cannot decrypt the stored health data.
3. **HCP App**: example of desktop application used by the Health Care Professionals (HCPs) to securely exchange health data with any S-EHR (with D2D) or any S-EHR Cloud (with R2D Emergency).
4. **InteropEHRate Health Services (IHS)**: prototype of libraries and services implementing D2D and R2D.
5. **InteropEHRate Research Services (IRS)**: prototype of libraries and services implementing RDS.



# INTEROPEHRATE FRAMEWORK

## INTEROPEHRATE HEALTH TOOLS (IHT)

### **Data schema conversion**

Mapping local DB schemas to the InteropEHRate FHIR profile

Conversion of records according to the mapping

### **Semantic codes conversion**

Mapping local terms to international codes

Conversion of codes according to the mapping

### **Information extraction**

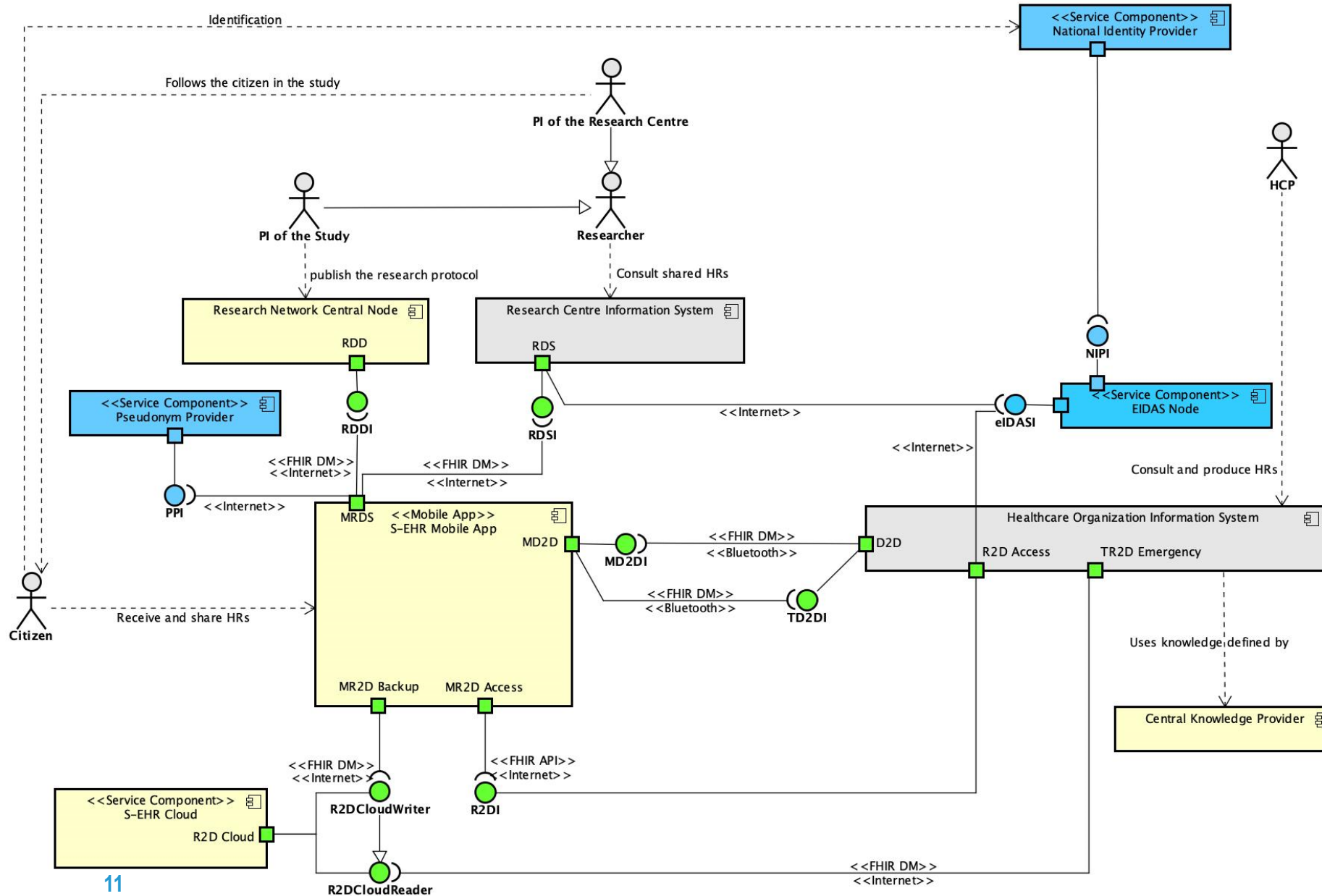
Extraction of codes and structured content from unformatted content (e.g. interpretation of equivalent expressions to represent the dosage of medicines)

### **Language translation**

Presentation of coded and extracted information into the language of the user

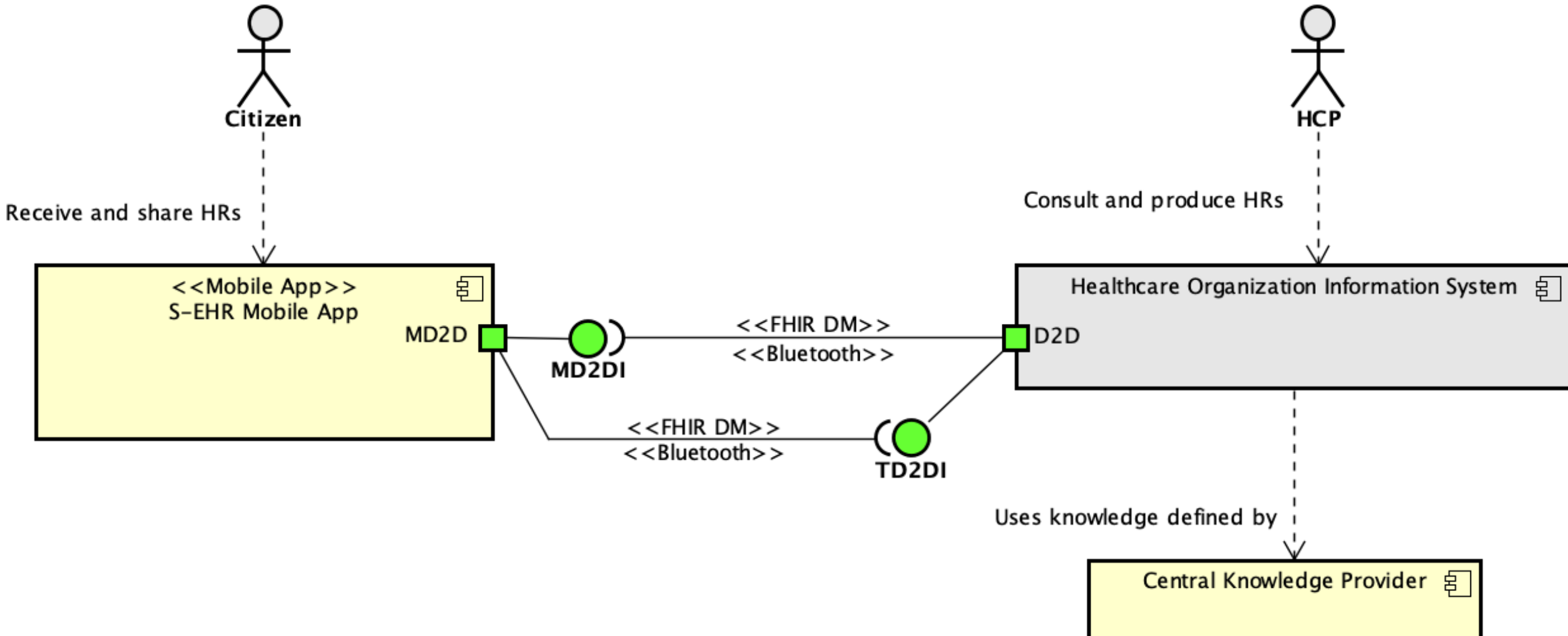
Integration with external services for free text translation

# INTEROPEHRATE EU ARCHITECTURE V.2

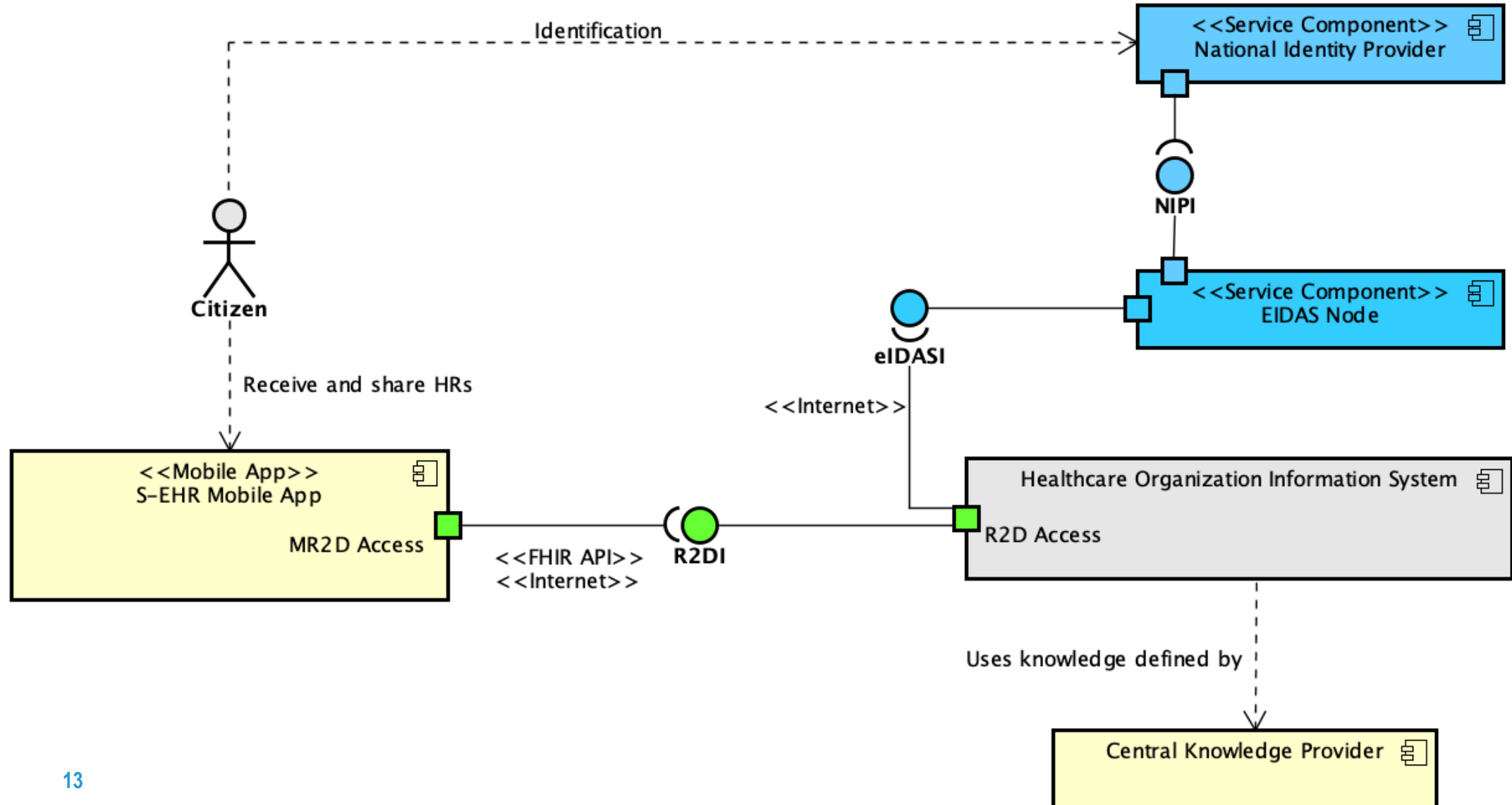


- **grey:** health organisation systems
- **blue:** EU infrastructure
- **green:** IEHR extension
- **yellow:** new products

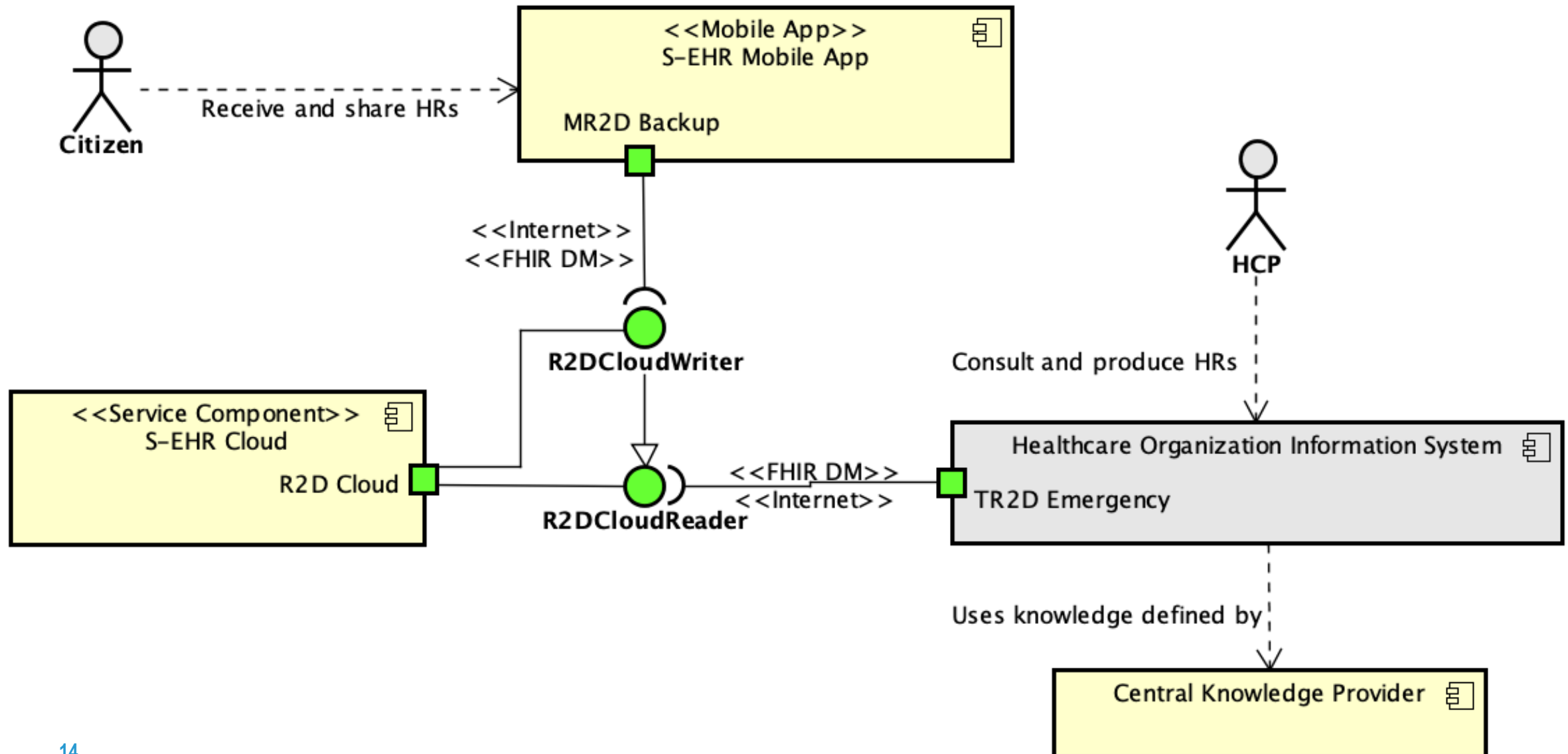
# INTEROPEHRATE EU ARCHITECTURE V.2: D2D



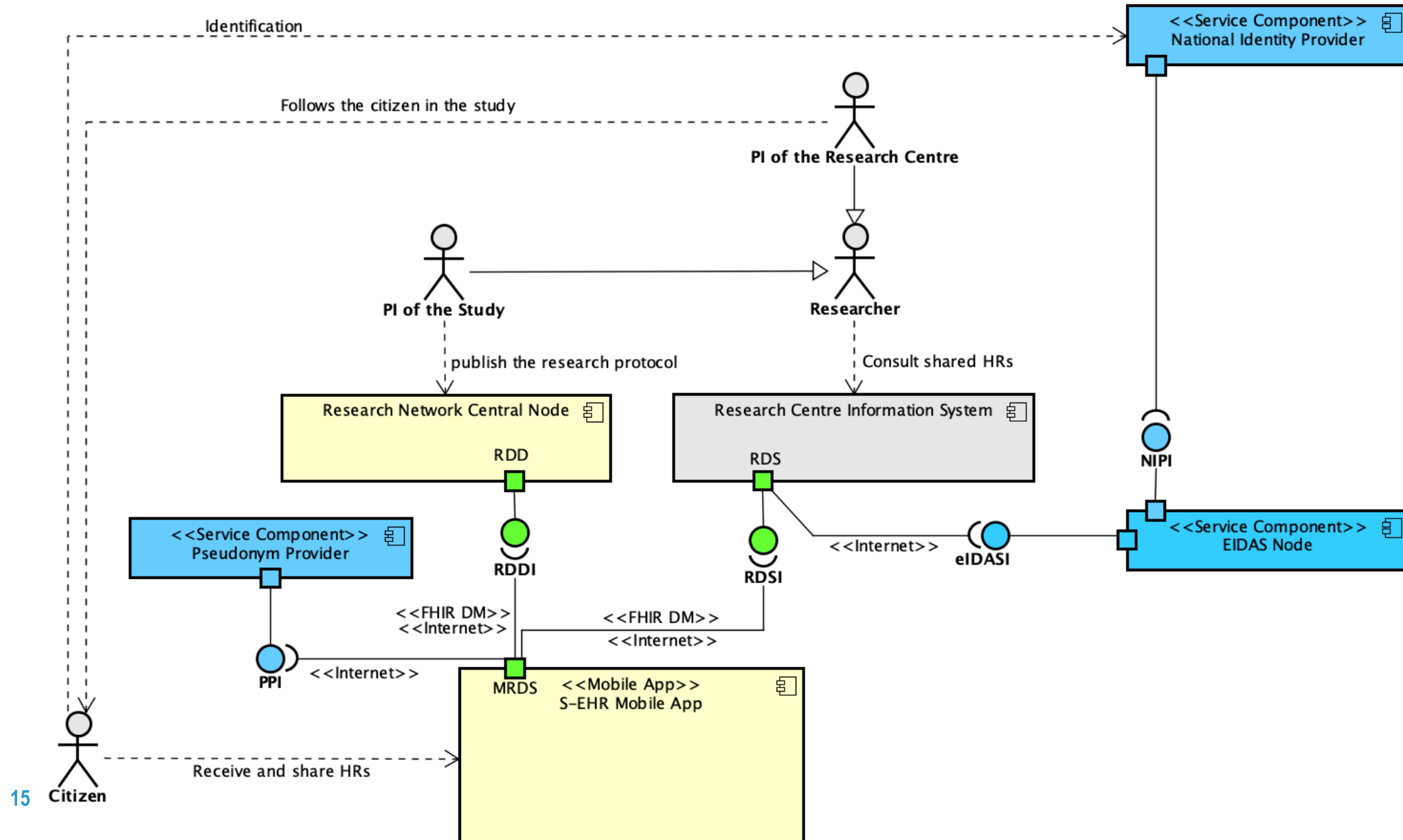
# INTEROPEHRATE EU ARCHITECTURE V.2: R2D ACCESS



# INTEROPEHRATE EU ARCHITECTURE V.2: R2D BACKUP & EMERGENCY



# INTEROPEHRATE EU ARCHITECTURE V.2: RDS



# THANK YOU

**Francesco Torelli**

[Francesco.Torelli@eng.it](mailto:Francesco.Torelli@eng.it)

↓ D2.5 - InteropEHRate Architecture - V2 (to be released in November)

